



Writtle  
University  
College

# UNDERGRADUATE EQUINE PROGRAMMES 2023

Animal





#### DID YOU KNOW?

WE HAVE A RANGE OF RESEARCH EQUIPMENT FOR STUDENTS TO USE IN OUR EQUINE FACILITIES.

# ARE HORSES YOUR PASSION?

---

If you dream of working with horses, our practical and academic courses are the ideal way to begin your journey into the equine industry. You will enjoy extensive access to all of our facilities at our specialist equine campus and learn alongside industry experts.

#### Top reasons to study Equine at Writtle University College:

1. Our course team includes industry experienced staff and practitioners in equine rehabilitation and therapy, behaviour, nutrition, breeding, business, competition riders and UKCC coaches.
2. Our students have access to a wide range of scientific technology and regularly present their research findings at international conferences.
3. You could assist in the rehabilitation of welfare rescue horses to help prepare them for rehoming.
4. Our students have access to many in-industry professionals due to the industry links held with Writtle.
5. We run an Equine Academy to support talented competition riders.

#### DID YOU KNOW?

We offer Foundation Year programmes for each of our BSc (Hons). These are four year programmes with a Year 0 covering Science and Academic skills. Students will then progress on to the three year degree.



## STUDENT PROFILE

"Since coming to WUC, I've made invaluable relationships with my fellow students and tutors. Staying in halls has encouraged me to meet new people and get involved with activities that are always happening around campus; I couldn't have chosen a better place to live while doing my degree. The support that has been provided to me throughout my course, in both the classroom and practicals, has been the biggest contributing factor to the amazing time I've had here."

Stephanie Vazquez  
BSc (Hons) Equine  
Performance and Business  
Management, Year 3



## ABOUT THE COURSE

The BSc (Hons) Equine Behavioural Science programme at Writtle University College offers you the opportunity to pursue a specialist interest in the fields of equine behaviour and welfare. The course covers a range of practical and theoretical modules, integrating the latest research to promote ethical and sustainable horsemanship practices using both our own and external client's horses. You will study specialist behaviour modules to improve your knowledge and understanding of the academic theory underpinning the natural behaviour of the horse, incorporating principles of ethology and psychology alongside health and welfare management.

## ASSESSMENT METHODS

The programme contains a variety of assessment methods to ensure practical and academic competence.

- Practical assessments including yard skills & health checks
- Examinations
- Case studies
- Video assessments
- Experimental work and write ups
- Poster presentations
- Role play
- Oral presentations - both individually and in small groups



## ENTRY REQUIREMENTS

- UCAS Tariff points: 96
- All applicants must hold a minimum of four GCSE passes at grade C/4 or above to include English, Maths and Science.
- Please visit our website for a full list of entry requirements.

# COURSE MODULES

## BSc (Hons) Equine Behavioural Science

### STAGE 1

SEMESTER A	SEMESTER B
Equine Anatomy & Physiology	Equine Nutrition
Equine Practical Skills	Breeding & Foaling
Equine Health Management	Saddle Fit & Farriery
Introduction to Psychology & Welfare	

### STAGE 2

SEMESTER A	SEMESTER B
Research Methods	
Business Skills	Equine Health & Disease
Young Horse Production*	
Equitation & Coaching	
Equine Cognition & Training	Measuring Behaviour & Welfare
Biological Basis of Equine Behaviour	

### STAGE 3

SEMESTER A	SEMESTER B
Capstone Project	
Behavioural Wellbeing	Equitation Science
Applied & Clinical Equine Nutrition	Current Issues in the Equine Industry
Applied Training & Behaviour Modification	

 OPTIONAL MODULES

\*Delivery for this module (13 weeks) will be spread over semester A and B

## **ABOUT THE COURSE**

The BSc (Hons) Equine Performance Science course is aimed at those individuals who wish to support their interest in the equine athlete, with a robust grounding in scientific principles relevant to the industry. The equine athlete is a complex creature, with supporting needs that address the way in which the animal is managed, to maximise performance in a range of diverse disciplines. This programme aims to provide the student with a thorough understanding of all of the possible contributors to performance, including those linked to the rider; therefore enabling a positive contribution to equine performance.

## **ASSESSMENT METHODS**

The programme contains a variety of assessment methods to ensure practical and academic competence.

- Assignments
- Examinations
- Biomechanical Analysis
- Case study reports
- Poster presentations
- Practical Assessments
- Training Portfolios

## **ENTRY REQUIREMENTS**

- UCAS Tariff points: 96
- All applicants must hold a minimum of four GCSE passes at grade C/4 or above to include English, Maths and Science.
- Please visit our website for a full list of entry requirements.

# COURSE MODULES

**BSc (Hons)  
Equine  
Performance  
Science**

## STAGE 1

SEMESTER A	SEMESTER B
Equine Anatomy & Physiology	Equine Nutrition
Equine Practical Skills	Breeding & Foaling
Equine Health Management	Saddle Fit & Farriery
Assessment for Performance & Health	Functional Anatomy

## STAGE 2

SEMESTER A	SEMESTER B
Research Methods	
Young Horse Production*	
Equitation & Coaching	
Exercise Physiology	Equine Health & Disease
Business Skills	
Introduction to Animal Biomechanics	Extrinsic Factors Affecting Equine Performance

## STAGE 3

SEMESTER A	SEMESTER B
Capstone Project	
Influencing Equine Performance	Equitation Science
Biomechanics	Current Issues in the Equine Industry
Applied & Clinical Equine Nutrition	Sports Medicine

\*Delivery for this module (13 weeks) will be spread over semester A and B



**BSc (Hons)  
Equine  
Performance  
and Business  
Management**

**UCAS CODE:  
64D1**

## **ABOUT THE COURSE**

The BSc (Hons) Equine Performance and Business Management programme incorporates the key themes of applied performance science, development of specialist practical skills, management skills for various business enterprises in all aspects of the equine industry. Students can select to focus their attention more on furthering their breeding and young horse development knowledge, or on developing their equitation and coaching knowledge.

## **ASSESSMENT METHODS**

The programme contains a variety of assessment methods to ensure practical and academic competence.

- Examinations
- Essays and technical reports
- Case studies
- Poster presentations
- Seminars
- Website Design
- Practical Assessments and Routine Checks
- Consultation Projects
- Video Creation

## **ENTRY REQUIREMENTS**

- UCAS Tariff points: 96
- All applicants must hold a minimum of four GCSE passes at grade C/4 or above to include English, Maths and Science.
- Please visit our website for a full list of entry requirements.



# COURSE MODULES

## STAGE 1

SEMESTER A	SEMESTER B
Equine Anatomy & Physiology	Equine Nutrition
Equine Practical Skills	Breeding & Foaling
Equine Health Management	Saddle Fit & Farriery
Equine Business & Event Management	

## STAGE 2

SEMESTER A	SEMESTER B
Research Methods	
Grassland & Facilities Management	
Training for Performance*	
	Equine Health & Disease
Young Horse Production*	
	Applied Stud Management
Equitation & Coaching	Equestrian Enterprise Management
Business Strategy & Operations	

## STAGE 3

SEMESTER A	SEMESTER B
Capstone Project	
Digital Brand Management	Current Issues in the Equine Industry
Conception to Competition	
Influencing Equine Performance	Equitation Science
Applied & Clinical Equine Nutrition	Consultancy Project

OPTIONAL MODULES - Breeding and Production
  OPTIONAL MODULES - Equitation and Coaching

\*Delivery for these modules (13 weeks) will be spread over semester A and B

**UCAS CODE:  
DD4H**

IMAGE CREDIT TO BOOTS AND  
HOOVES PHOTOGRAPHY

## **ABOUT THE COURSE**

The BSc (Hons) Equine Sports Therapy and Rehabilitation is designed to provide students with an exceptional knowledge of many aspects of sport horse performance. This includes a detailed level of anatomy and physiology, and factors affecting performance such as saddlery, farriery and biomechanics. Upon successful completion of the programme, students will be able to practice and gain insurance as an Equine Sports Therapist.

## **ASSESSMENT METHODS**

The programme contains a variety of assessment methods to ensure practical and academic competence including:

- Reports
- Examinations
- Anatomy workbooks
- Videos
- Rehabilitation case study reports
- Poster presentations
- Biomechanical Analysis
- Practical assessment of both yard competence and skills related to sports therapy

## **ENTRY REQUIREMENTS**

- UCAS Tariff points: 96
- All applicants must hold a minimum of four GCSE passes at grade C/4 or above to include English, Maths and Science.
- Please visit our website for a full list of entry requirements.

# COURSE MODULES

**BSc (Hons)  
Equine Sports  
Therapy and  
Rehabilitation**

## STAGE 1

SEMESTER A	SEMESTER B
Equine Anatomy & Physiology	Equine Nutrition
Equine Practical Skills	Introduction to Equine Therapy
Equine Health Management	Saddle Fit & Farriery
Assessment for Performance and Health	Functional Anatomy

## STAGE 2

SEMESTER A	SEMESTER B
Research Methods	
Business Skills	
Animal Therapeutic Techniques	Rehabilitation & Performance
Exercise Physiology	Equine Health & Disease
Introduction to Animal Biomechanics	Extrinsic Factors Affecting Equine Performance

## STAGE 3

SEMESTER A	SEMESTER B
Capstone Project	
Equine Massage & Remedial Exercise	
Biomechanics	Sports Medicine
Complementary Therapies	Equitation Science

A close-up photograph of a petri dish containing a bacterial culture on a green agar medium. The culture shows various patterns of growth, including streaks and small colonies. The dish is held by a hand, and another petri dish with a different culture is visible in the background.

**UCAS CODE:  
D4D3**

**BSc (Hons)  
Equine  
Bioveterinary  
Science\***

*\*Subject to  
validation  
approval*

## **ABOUT THE COURSE**

BSc (Hons) Equine Bioveterinary Science is aimed at individuals who are interested in acquiring a sound knowledge of biological and veterinary sciences applied to the horse. The course combines theory and practical skills covering all main equine bioveterinary science areas, such as:

- Breeding and Reproduction Science
- Diseases and Epidemiology
- Equine Health
- Immunology and Pharmacology
- Nutrition
- Performance
- Veterinary Microbiology

## **ASSESSMENT METHODS**

The programme contains a variety of assessment methods to ensure practical and academic competence.

- Practical assessments including yard and laboratory skills
- Examinations - both multiple choice and essay questions
- Essays and technical reports
- Case studies
- Poster presentations
- Seminars
- Project development plan
- Capstone project (Dissertation)

## **ENTRY REQUIREMENTS**

- UCAS Tariff points: 96
- All applicants must hold a minimum of four GCSE passes at grade C/4 or above to include English, Maths and Science.
- Please visit our website for a full list of entry requirements.

# COURSE MODULES

## BSc (Hons) Equine Bioveterinary Science\*

*\*Subject to  
validation  
approval*

### STAGE 1

SEMESTER A	SEMESTER B
Equine Anatomy & Physiology	Equine Nutrition
Equine Practical Skills	Breeding & Foaling
Equine Health Management	Ethics & Welfare
Veterinary Microbiology & Laboratory Skills	

### STAGE 2

SEMESTER A	SEMESTER B
Research Methods	
Equine Research Technology	
Exercise Physiology	Equine Reproduction & Genetics
Equine Behaviour Science	Equine Pathology, Immunology & Pharmacology
Commercial & Professional Skills for Bioveterinary Science	

### STAGE 3

SEMESTER A	SEMESTER B
Capstone Project	
Applied & Clinical Equine Nutrition	Current Issues in the Equine Industry
Veterinary Epidemiology in Public Health	Sports Medicine
Equine Biotechnology	Equine Growth & Development



## Diploma of HE Equine Behavioural Science

**UCAS CODES:  
98F2**

## ABOUT THE COURSE

This two-year full-time diploma course will provide you with the opportunity to specialise in the field of equine behaviour. The course covers a range of practical and theoretical modules in anatomy and physiology, nutrition and health, as well as specialist modules to develop your knowledge and understanding of the academic theory underpinning the natural behaviour of the horse. After successfully completing this course, you are able to continue on to the final year of BSc (Hons) Equine Behavioural Science.

## ASSESSMENT METHODS

The programme contains a variety of assessment methods to ensure practical and academic competence.

- Coursework
- Essays and reports aimed at different audiences
- Presentations and class discussions
- Practical and theoretical situations
- Portfolios

## ENTRY REQUIREMENTS

- UCAS Tariff points: 80
- Please visit our website for a full list of entry requirements.

# COURSE MODULES

## Diploma of HE Equine Behavioural Science

### STAGE 1

SEMESTER A	SEMESTER B
Equine Anatomy & Physiology	Equine Nutrition
Equine Practical Skills	Breeding & Foaling
Equine Health Management	Saddle Fit & Farriery

Introduction to Psychology & Welfare

### STAGE 2

SEMESTER A	SEMESTER B
Research Methods	
Business Skills	Equine Health & Disease
Young Horse Production*	
Equitation & Coaching	
Equine Cognition & Training	Measuring Behaviour & Welfare

Biological Basis of Equine Behaviour

 optional modules

\*Delivery for this module (13 weeks) will be spread over semester A and B

UCAS CODES:  
D431

## ABOUT THE COURSE

This two-year full-time diploma course will provide you with the opportunity to specialise in the scientific principles relevant to equine performance. The equine athlete is a complex creature, with supporting needs that address the way in which the animal is managed, to maximise performance in a range of diverse disciplines. After successfully completing this course, you are able to continue on to the final year of our BSc (Hons) Equine Performance Science.

## ASSESSMENT METHODS

The programme contains a variety of assessment methods to ensure practical and academic competence.

- Coursework
- Essays and reports aimed at different audiences
- Presentations and class discussions
- Practical and theoretical situations
- Portfolios

## ENTRY REQUIREMENTS

- UCAS Tariff points: 80
- Please visit our website for a full list of entry requirements.



# COURSE MODULES

## Diploma of HE Equine Performance Science

### STAGE 1

SEMESTER A	SEMESTER B
Equine Anatomy & Physiology	Equine Nutrition
Equine Practical Skills	Breeding & Foaling
Equine Health Management	Saddle Fit & Farriery
Assessment for Performance and Health	Functional Anatomy

### STAGE 2

SEMESTER A	SEMESTER B
Research Methods	
Young Horse Production*	
Business Skills	
Equitation & Coaching	
Exercise Physiology	Equine Health & Disease
Introduction to Animal Biomechanics	Extrinsic Factors Affecting Equine Performance

\*Delivery for this module (13 weeks) will be spread over semester A and B

## ABOUT THE COURSE

This two-year full-time diploma course will provide you with the opportunity to specialise in Equine Performance and Business Management. The course offers two alternative pathways to prepare students for future careers in either the coaching, training and sports performance industry or the quickly expanding industry of breeding and production. After successfully completing this course, you are able to continue on to the final year of our BSc (Hons) Equine Performance and Business Management.

## ASSESSMENT METHODS

The programme contains a variety of assessment methods to ensure practical and academic competence.

- Coursework
- Essays and reports aimed at different audiences
- Presentations and class discussions
- Practical and theoretical situations
- Portfolios

## ENTRY REQUIREMENTS

- UCAS Tariff points: 80
- Please visit our website for a full list of entry requirements.

**COURSE MODULES**

<b>STAGE 1</b>	
<b>SEMESTER A</b>	<b>SEMESTER B</b>
Equine Anatomy & Physiology	Equine Nutrition
Equine Practical Skills	Breeding & Foaling
Equine Health Management	Saddle Fit & Farriery
Equine Business & Event Management	
<b>STAGE 2</b>	
<b>SEMESTER A</b>	<b>SEMESTER B</b>
Research Methods	
Grassland & Facilities Management	
Training for Performance*	
	Equine Health & Disease
Young Horse Production*	
	Applied Stud Management
Equitation & Coaching	Equestrian Enterprise Management
Business Strategy & Operations	

\*Delivery for this module (13 weeks) will be spread over semester A and B

 <b>OPTIONAL MODULES - Breeding and Production</b>	 <b>OPTIONAL MODULES - Equitation and Coaching</b>
---	---

UCAS CODES:  
D4G2

## ABOUT THE COURSE

This two-year full-time diploma course will provide you with the opportunity to specialise in Equine Sports Therapy and Rehabilitation. The course will cover the structure and function of the horse and then relates that to how the horse moves and how the natural gait may change when areas of tension are seen in the musculature. It also demonstrates how important it is to work as a team player alongside the veterinarian, farrier, saddle fitter, dentist and trainer to enhance and optimise the horses' wellbeing, body balance and performance. After successfully completing this course, you are able to continue on to the final year of our BSc (Hons) Equine Sports Therapy and Rehabilitation.

## ASSESSMENT METHODS

The programme contains a variety of assessment methods to ensure practical and academic competence.

- Coursework
- Essays and reports aimed at different audiences
- Presentations and class discussions
- Practical and theoretical situations
- Portfolios

## ENTRY REQUIREMENTS

- UCAS Tariff points: 80
- Please visit our website for a full list of entry requirements.

# COURSE MODULES

Diploma  
of HE  
Equine Sports  
Therapy and  
Rehabilitation

## STAGE 1

SEMESTER A	SEMESTER B
Equine Anatomy & Physiology	Equine Nutrition
Equine Practical Skills	Introduction to Equine Therapy
Equine Health Management	Saddle Fit & Farriery
Assessment for Performance and Health	Functional Anatomy

## STAGE 2

SEMESTER A	SEMESTER B
Research Methods	
Business Skills	
Animal Therapeutic Techniques	Rehabilitation & Performance
Exercise Physiology	Equine Health & Disease
Introduction to Animal Biomechanics	Extrinsic Factors Affecting Equine Performance



**UCAS CODE:  
D422**

**Certificate  
of HE  
Equine Studies**

## **ABOUT THE COURSE**

This one-year full-time course will provide you with the opportunity to develop practical management techniques including husbandry systems, integrated with the underpinning scientific theory. Students on this programme are able to choose a pathway to study - aligned with those on the first year students on BSc (Hons) programmes. You will also gain an understanding of the principles of equine science in relation to anatomy and physiology, nutrition and health management. After completing this course, you are able to continue on to the second year of one of our BSc (Hons) awards in either Equine Performance and Business Management, Equine Behavioural Science or Equine Sports Therapy and Rehabilitation.

## **ASSESSMENT METHODS**

The programme contains a variety of assessment methods to ensure practical and academic competence.

- Coursework
- Essays and reports aimed at different audiences
- Presentations and class discussions
- Practical and theoretical situations
- Portfolios

## **ENTRY REQUIREMENTS**

- UCAS Tariff points: 48
- Please visit our website for a full list of entry requirements.

# COURSE MODULES

Certificate  
of HE  
Equine Studies

## STAGE 1

SEMESTER A	SEMESTER B
Equine Anatomy & Physiology	Equine Nutrition
Equine Practical Skills	Saddle Fit & Farriery
Equine Health Management	

### Progression Routes onto DipHE or BSc (Hons)

#### Pathway 1 (progress to Equine Performance and Business Management)

Equine Business & Event Management	
	Breeding & Foaling

#### Pathway 2 (progress to Equine Behavioural Science)

Introduction to Psychology & Welfare	
	Breeding & Foaling

#### Pathway 3 (progress to Equine Performance Science)

Assessment for Performance & Health	Functional Anatomy
	Breeding & Foaling

#### Pathway 4 (progress to Equine Sports Therapy and Rehabilitation)

Assessment for Performance & Health	Functional Anatomy
	Introduction to Equine Therapy



## POTENTIAL CAREER PROSPECTS:

- Further study onto a masters programme e.g. MSc Equine Performance Science
- Advisor to Governing Bodies
- Breeding Technician
- Business Consultancy
- Charity Advisor
- Coaching and Training
- Equine Behavioural Consultant
- Equine Nutrition Specialist
- Equine Resource Management
- Equine Sports Therapist
- Technical Sales Representative
- Event Management
- Insurance Advisor
- Lecturer
- Massage Therapist
- Police Horse Training
- Rehabilitation Therapist
- Research Assistant in Equine or Biological Sciences
- Scientific Journalist
- Training Rehabilitation
- Welfare Assessor/Advisor
- Young Horse Production
- FE Education/Teaching

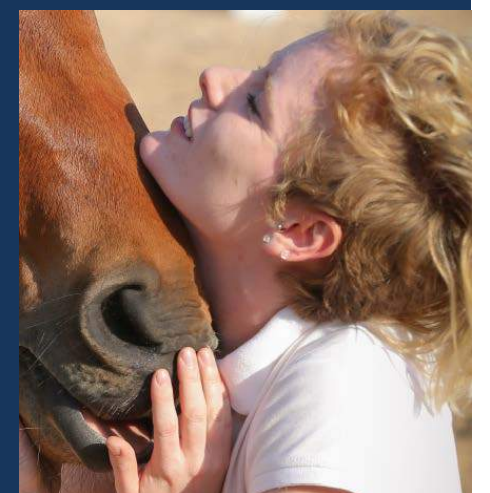




## STUDENT PROFILE

"The knowledge and skills I acquired at Writtle have allowed me to get where I am today in my life. I am very grateful for the theoretical and practical skills I learnt whilst studying. These skills allow me to work with professional confidence within the equine industry"

**Lauren Allport**  
WUC BSc (Hons) Equine Sports  
Therapy & Rehabilitation Graduate  
now working as an Equine Sports  
Therapist





## READING LIST

Many students ask us to recommend books for them to buy or read before they start. All the books that you will need are available from the WUC library once you are here so there is no need to rush out and buy any. Each module will have a suggested reading list and as you progress through the course you will be encouraged to use less books and more journal articles in your reading, which again are available through the WUC library.

If you are really keen to buy books before you come, some of the books that are recommended are:

Bishop, R. (2003) *The Horse Nutrition Bible: The Comprehensive Guide to the Feeding of Your Horse*. Newton Abbot, UK: David & Charles.

Dyce, K.M., Sack, W.O.O. and Wensing, C.J.G.J.G. (2010) *Textbook of veterinary anatomy*. (4th edn). London: Saunders.

Fraser, A.F. (2010) *The behaviour and welfare of the horse*. (2nd edn). CABI, Wallingford, UK.

McGowan, C. (2007) *Animal physiotherapy: assessment, treatment and rehabilitation of animals* [E-Book]. Chichester: Blackwell.

Parker, R.O. (2012) *Equine science*. (4th edn). Clifton Park, N.Y.; Andover: Delmar; Cengage Learning.



## EQUIPMENT

This equipment list will give you an idea of what you will need to start your course. There will also be the opportunity to visit the local saddlery during induction week.

### For Theory sessions

- Pens, pencils, paper and folders for note taking.
- Scientific calculator
- You might find a digital camera/ smart phone useful for taking photos during practicals when appropriate
- A suitable laptop for your studies.

### For Practical sessions

- Riding hat or skull cap, hats must be worn for leading, groundwork and riding. This needs to meet current safety standards:
  - PAS015 (1998 or 2011) plus BSI Kitemark or Inspec IC Mark
  - VG1 01.040 (2014-12) plus BSI Kitemark or Inspec IC Mark
  - ASTM F1163: 2004a or 04a onwards plus SEI Mark
  - SNELL E2001 or E2016 with official SNELL label and number
  - AS/NZS 3838 2006 onwards plus SAI Global Mark
- Riding gloves (gloves must be worn when riding, lunging and leading)
- Suitable sturdy footwear – i.e. boots, long or short for yard practicals
- When handling the stallions and young stock, steel toe capped boots are required
- Suitable smart clothing (dark coloured plain trousers) for working around horses including waterproofs
- White lab coat (needed for laboratory sessions)

### In addition, students wishing to ride will also need:

- A pair of jodphurs or breeches (dark neutral colours)
- Riding boots/gaiters/half chaps
- Short whip and dressage whip
- Body protector (you are not permitted to jump without one); it should be a Level 3 BETA 2009 (purple and white label) or 2018 (black and blue label)



## WHY WRITTLE UNIVERSITY COLLEGE?

1. Our Students work with Redwings and World Horse Welfare (WHW), assisting in the rehabilitation and training of their rescue horses in preparation for rehoming.
2. Our staff are involved in research and bring this into their lecturing area of expertise, as well as relevant industry practice and qualifications to bring you specialist delivery by a team of staff who are passionate about their subject areas.
3. We have an impressive range of state of the art research equipment for students to use within both of our Equine facilities for their research. Some examples of equipment you could be using for assignments and your own research include:
  - Heart rate monitors for measuring exercise responses and stress
  - Infrared thermography cameras for measuring stress and tissue responses
  - Telerein for measuring rein tension
  - Tekscan for measuring saddle pressure
  - Various gait analysis software
  - Therapeutic modalities such as ultrasound, laser and more
  - Target training devices
  - Intelligence testing boards
  - Locomotion data loggers and GPS
  - Equinosis; Lameness locator for lameness detection
  - And much more!
4. Students have access to all facilities across the campus, including both of the yards so you can practice the skills that you learn in lectures and practicals. Many students take on project horses, developing their training or rehab programmes, and work on behavioural issues.
5. We offer a diverse and novel range of teaching and assessment techniques, with less focus on exams and more on relevant technologies, presentation and writing styles to challenge and develop your academic and practical skills, involve you in active learning and focus on the application of the taught elements into real life practice, with various guest speakers and trips to enhance your learning experience.



## EQUINE ACADEMY

The WUC Equine Academy is a new initiative aimed at supporting between 6 and 12 talented riders for one academic year (with the potential for this to be extended) whilst the rider is studying for any Higher Education award at Writtle University College.

**The package provides support in two forms:**

- training for up to six established competition rider/horse combinations  
OR
- a place on our Performance Horse Production Pathway (PHPP) for a further four to six competition level riders

All applicants to the Equine Academy must be determined and dedicated competitive equestrians. They will understand their goals and see them realised with the support and guidance of experienced and professional in-house and guest coaches, whether the applicants' discipline is Dressage, Showjumping, or Eventing, or another recognised horse sport.



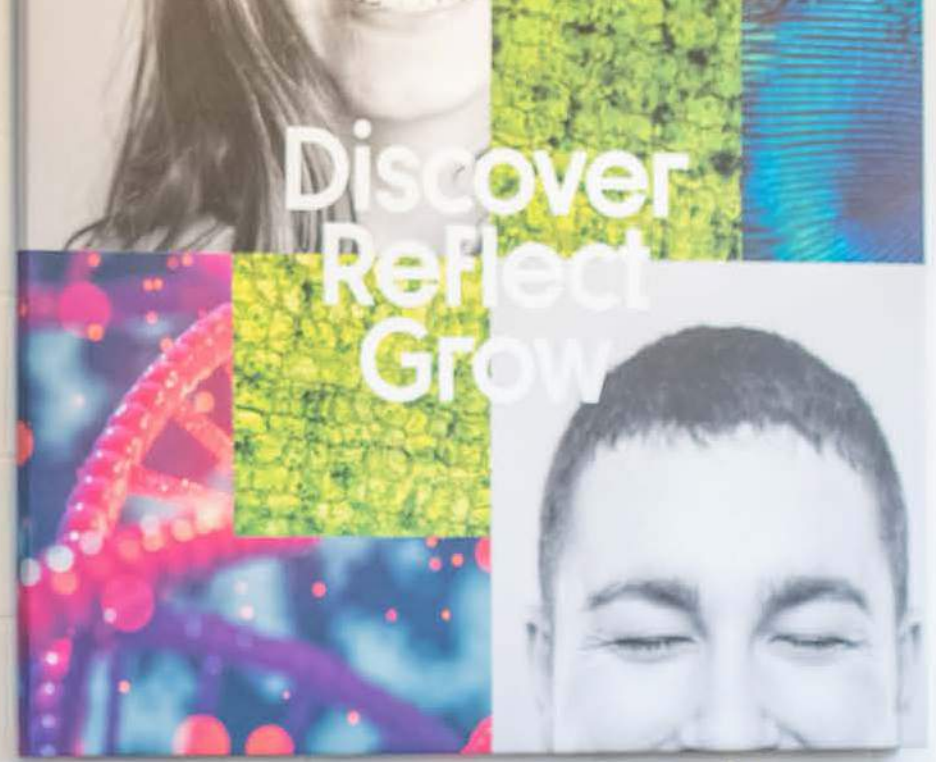
**NATIONAL STUDENT SURVEY**



**84%**

**Overall Student Satisfaction with teaching**  
**Highest University-Sector Institution in East of England\***

\*Based on 2022 NSS Taught data



# NATIONAL STUDENT SURVEY



Based on 2022 NSS  
Taught data  
compared to England  
sector wide

# #1

Top in East of England  
Overall Student  
Satisfaction  
in Teaching



Student Voice

## 76%

66% Sector

The teaching on  
my course

## 88%

80% Sector

Assessment and  
feedback

## 77%

69% Sector

Learning Resources

## 81%

81% Sector

Organisation and  
management

## 74%

70% Sector

Learning  
opportunities

## 86%

79% Sector

Academic support

## 80%

74% Sector

Learning  
Community

## 81%

68% Sector



Writtle  
University  
College

We hope this guide has given you all the information you need, but please do not hesitate to contact our admissions team if you have any questions about applying to study here, want an update on the status of your application, or have a query about what you need to do next.

Please keep an eye on our website for details on our upcoming events

T: 01245 424200  
E: [enquire@writtle.ac.uk](mailto:enquire@writtle.ac.uk)

Want to ask a question about student life?  
Contact a current student at  
[askastudent@writtle.ac.uk](mailto:askastudent@writtle.ac.uk)

[writtle.ac.uk/UG-Equine](http://writtle.ac.uk/UG-Equine)